

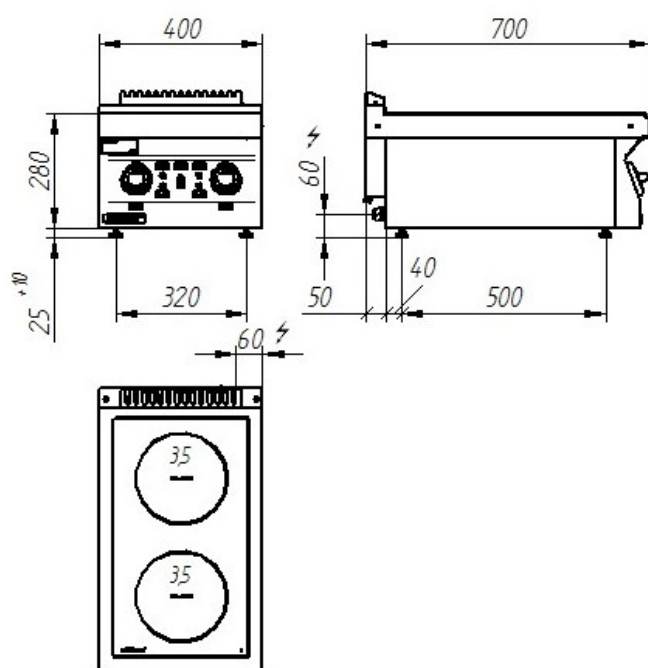
<b>Model:</b>	<b>700.KE-2i</b>	400x700x280 [mm]
	<b>700.KE-2i/S-400</b>	400x700x900 [mm]
	<b>700.KE-2i/T-400</b>	400x700x900 [mm]
<b>Cooking fields</b>	<b>Number</b>	2
	<b>Ø</b>	220 mm
	<b>Power rating</b>	3.5 kW
<b>Power rating</b>	7 kW	
<b>Rated voltage, type of current</b>	400V 3N~	



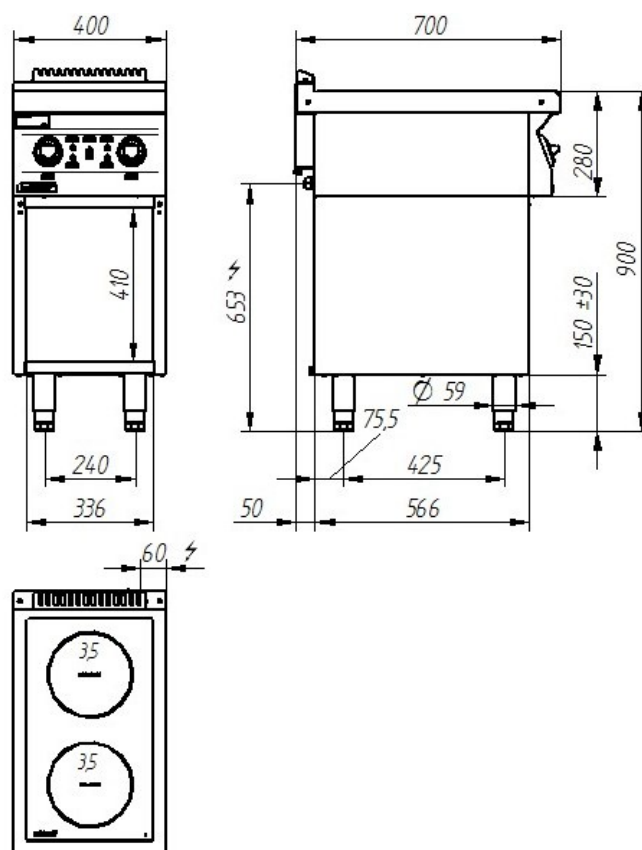
### Description:

Induction cookers are made of high-grade stainless steels. Working plate made of AISI 304 stainless steel with thickness  $\neq 1.5\text{mm}$ . Pot presence detector. Smooth power adjustment from 5 to 100%.

#### 700.KE-2i



#### 700.KE-2i/S-400 700.KE-2i/T-400



The picture is for reference only; final product may be slightly different from the presented example.