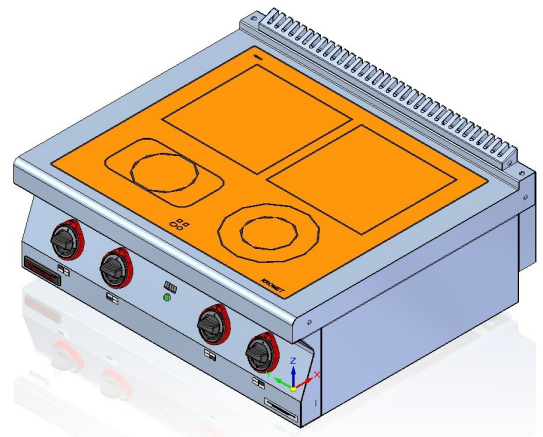


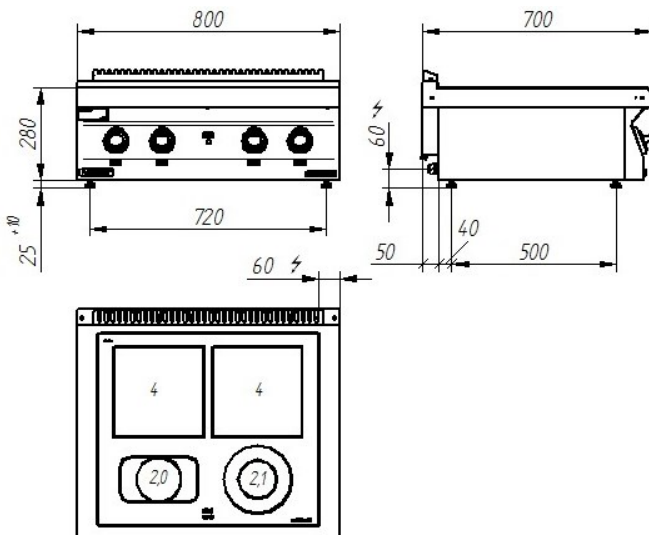
Model:	700.KE-4C		800x700x280 [mm]	
	700.KE-4C/S-800		800x700x900 [mm]	
	700.KE-4C/T-800		800x700x900 [mm]	
Cooking fields	Number	1	1	2
	Ø	210 mm	Ø140 mm (axb) 140x240 mm	(axb) 270x270 mm
	Power rating	2.1 kW	2 kW	4 kW
Power rating		12.1 kW		
Rated voltage, type of current: 400V 3N~				



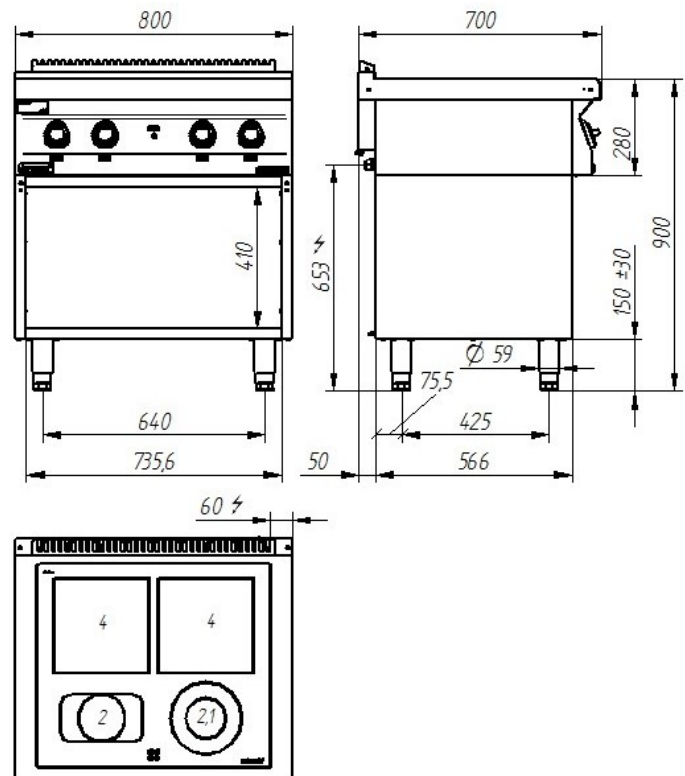
Description:

Ceramic cookers are made of high-grade stainless steels. Working plate made of AISI 304 stainless steel with thickness $\neq 1.5\text{mm}$. Pot presence control on rear fields.

700.KE-4C



700.KE-4C/S-800 700.KE-4C/T-800



The picture is for reference only; final product may be slightly different from the presented example.