
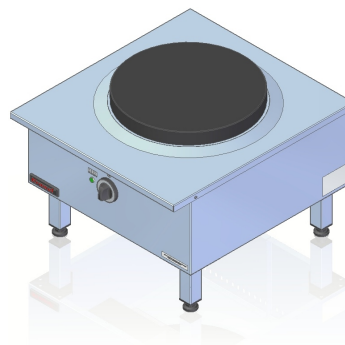


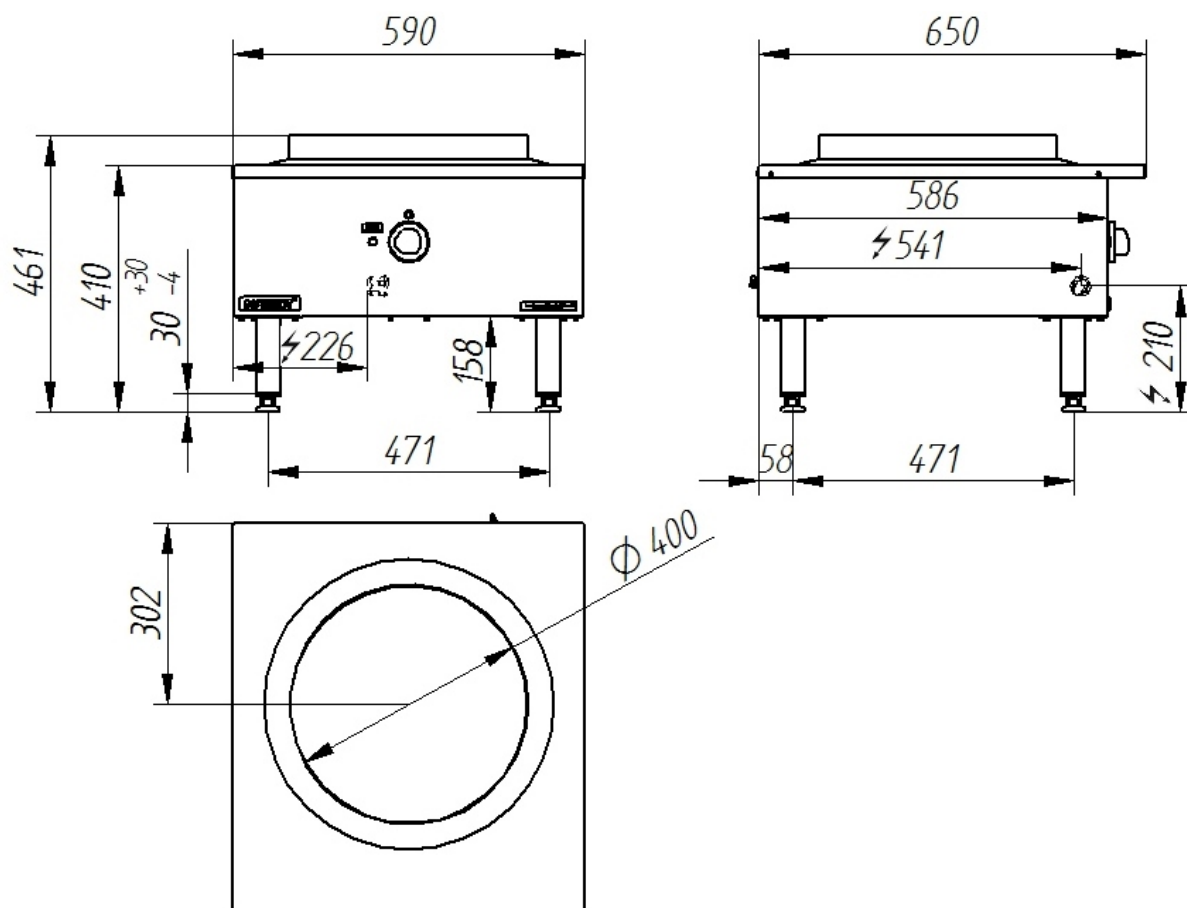
<b>Model:</b>	<b>000.TE-1F</b>	590x650x410 [mm]
<b>Heating plates</b>	<b>Number</b>	1
		400 mm
	<b>Ø</b>	
	<b>Power rating</b>	5 kW
	<b>Rated voltage, type of current</b>	400V 3N~



#### Description:

Electric stove is made of high-grade stainless steels. Upper plate thickness  $\approx 1.5$  mm. Long-life, fast heating plate.

#### 000.TE-1F



The picture is for reference only; final product may be slightly different from the presented example.