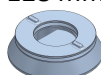
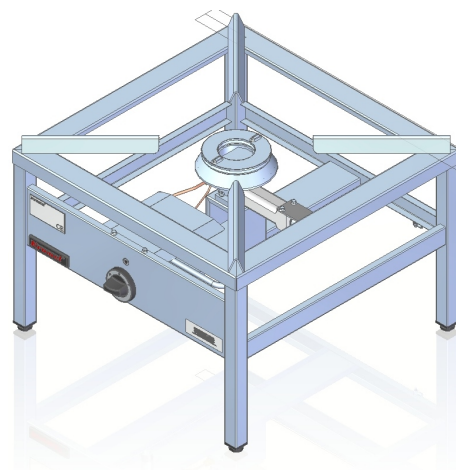


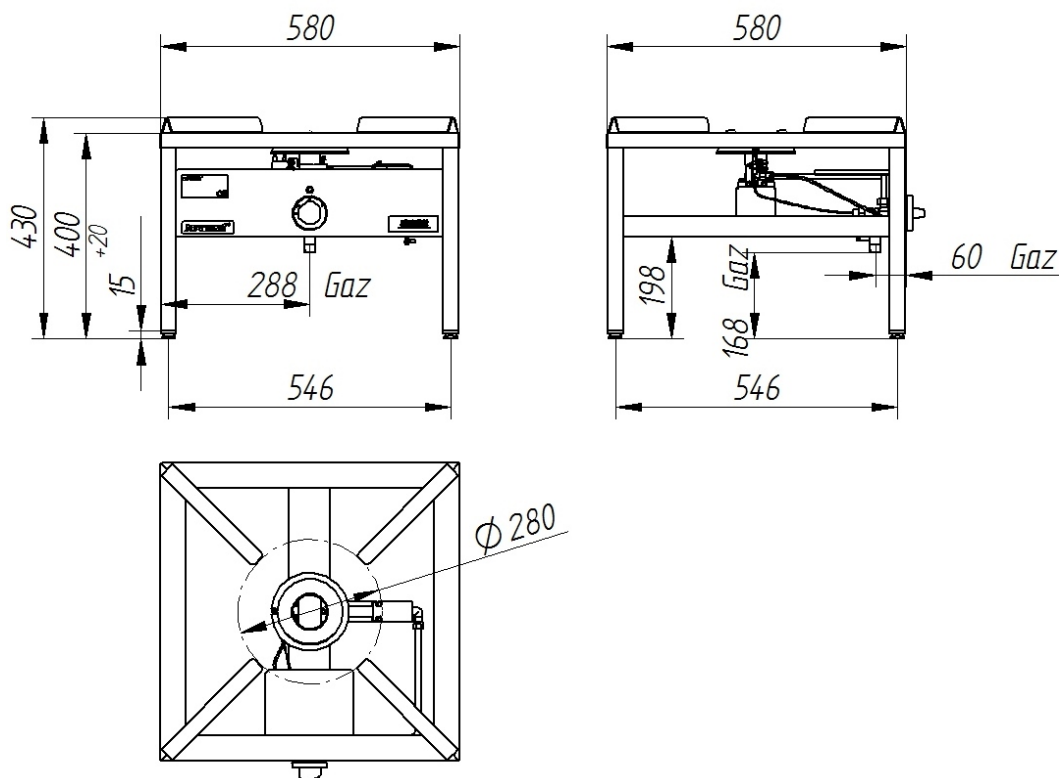
Model:	000.TG-1	580x580x400 [mm]	
Burners	Number	1	
		128 mm	
	Ø		
Power rating		9 kW	
		7740 kcal/h	
Gas connection		R1/2	
Gas consumption	E G20 [20mbar]	m ³ /h	0.95
	Lw G27 [20mbar]	m ³ /h	1.10
	3B/P G30 [37mbar]	kg/h	0.66



Description:

Gas stove is made of high-grade stainless steels. Welded construction. Burners made of cast-iron. Stove is equipped pilot burner with flame safety device.

000.TG-1



The picture is for reference only; final product may be slightly different from the presented example.

60 LAT
NA RYNKU

Tradition and experience