

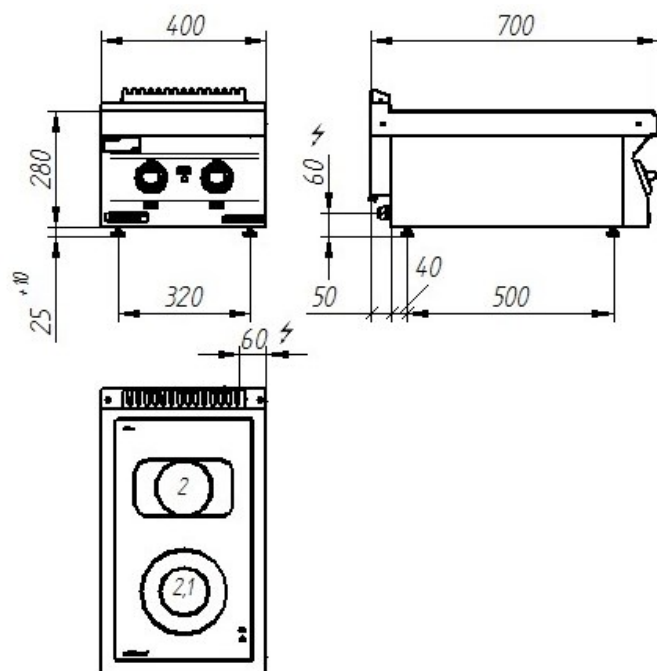
Model:	700.KE-2C	400x700x280 [mm]	
	700.KE-2C/S-400	400x700x900 [mm]	
	700.KE-2C/T-400	400x700x900 [mm]	
Cooking fields	Number	1	1
	Ø [mm]	210 mm	Ø140 mm, (axb) 140x240 mm
	Power rating	2.1 kW	2 kW
Power rating		4.1 kW	
Rated voltage, type of current		400V 3N~	



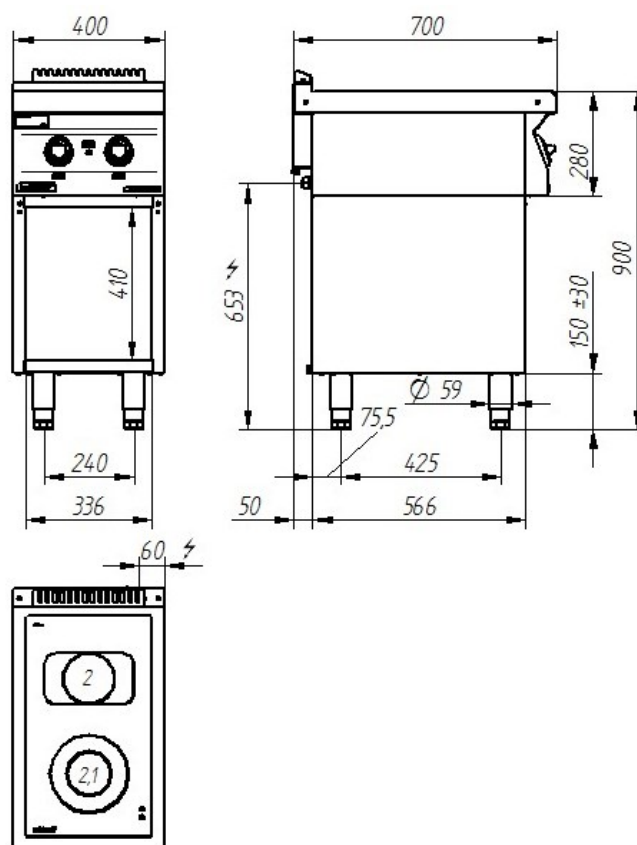
Description:

Ceramic cookers are made of high-grade stainless steels. Working plate made of AISI 304 stainless steel with thickness $\approx 1.5\text{mm}$.

700.KE-2C



700.KE-2C/S-400 700.KE-2C/T-400



The picture is for reference only; final product may be slightly different from the presented example.