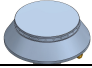
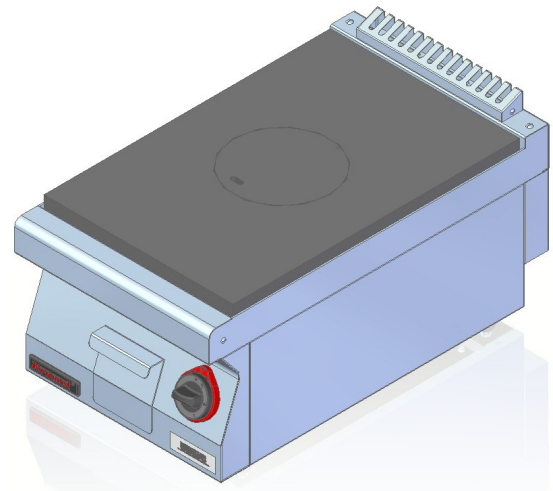


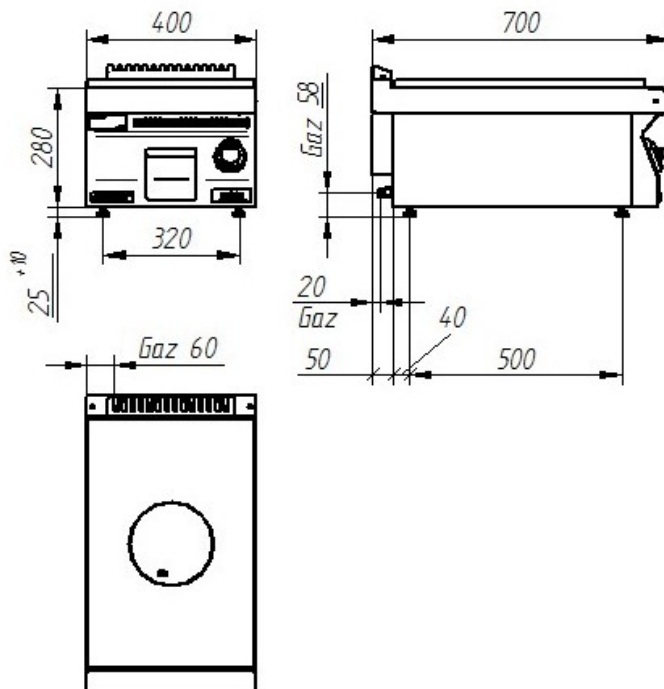
<b>Model:</b>	<b>700.KG/I-400</b>	400x700x280 [mm]	
	<b>700.KG/I-400/S-400</b>	400x700x900 [mm]	
	<b>700.KG/I-400/T-400</b>	400x700x900 [mm]	
<b>Burners</b>	<b>Number</b>	1	
		104 mm	
	<b>Ø</b>		
	<b>Power rating</b>	4.5 kW 3870 kcal/h	
<b>Power rating</b>		4.5 kW	
<b>Gas connection</b>		R1/2	
<b>Gas consumption</b>	<b>E G20 [20mbar]</b>	m³/h	1.42
	<b>Lw G27 [20mbar]</b>	m³/h	1.65
	<b>3B/P G30 [37mbar]</b>	kg/h	1.00



#### Description:

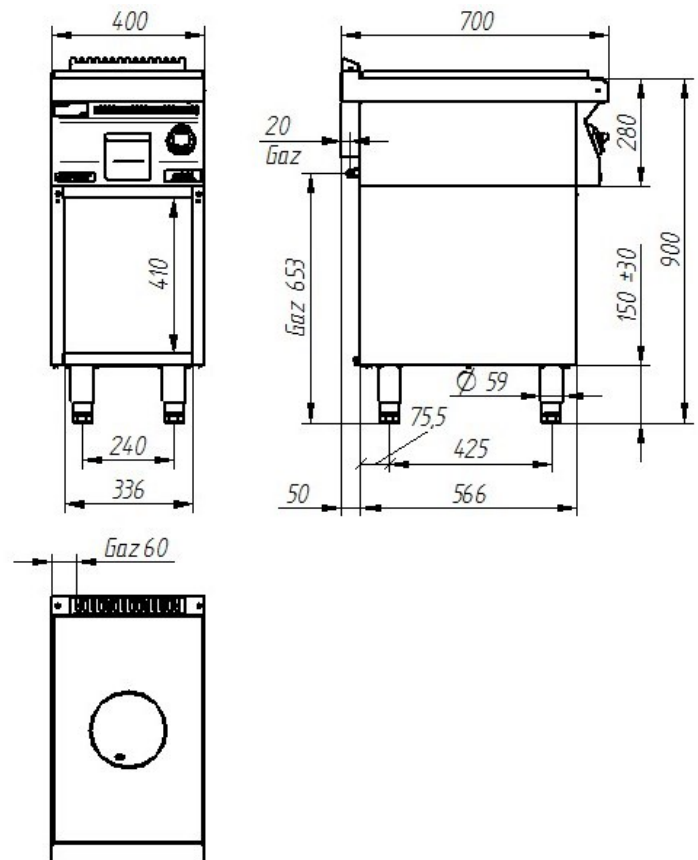
Gas cookers are made of high-grade stainless steels. Top plate made of AISI 304 stainless steel with thickness  $\neq 1.5$ mm, burners made of cast-iron. Cooker is equipped with pilot burner with flame safety device. Cast-iron cooker plate ensures heterogeneous distribution of temperatures over the surface.

#### 700.KG/I-400



#### 700.KG/I-400/S-400

#### 700.KG/I-400/T-400



The picture is for reference only; final product may be slightly different from the presented example.

**60 LAT**  
NA RYNKU

**Tradition and experience**