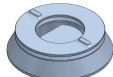
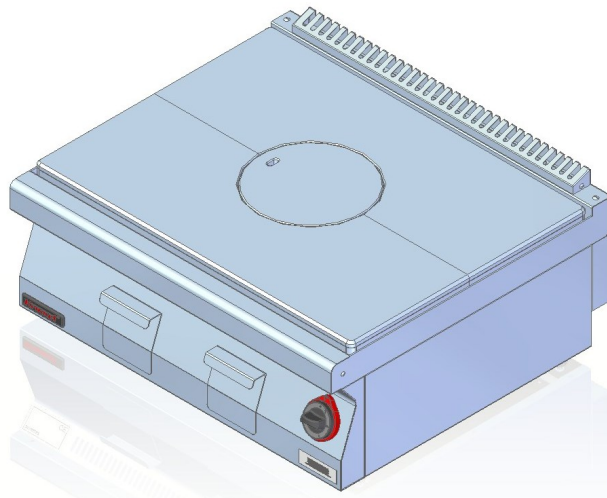
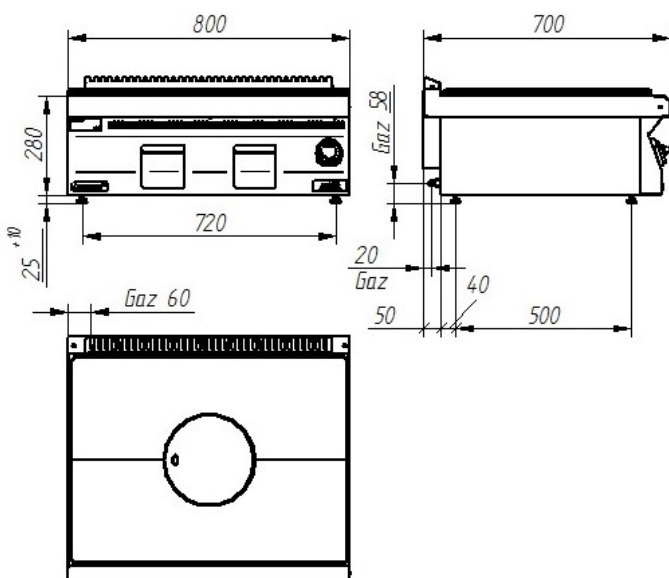
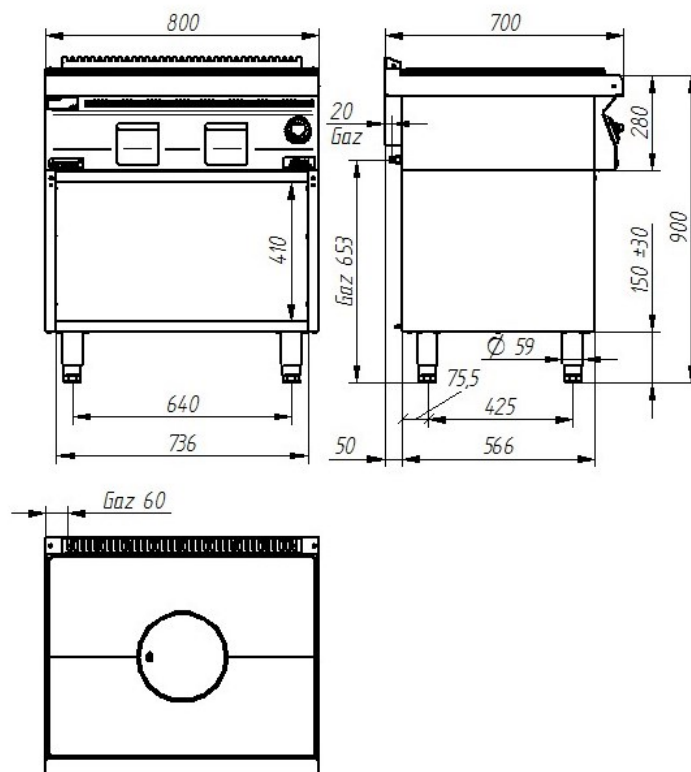


Model:	700.KG/I-800	800x700x280 [mm]	
	700.KG/I-800/S-800	800x700x900 [mm]	
	700.KG/I-800/T-800	800x700x900 [mm]	
Burners	Number	1	
		128 mm	
	Ø		
	Power rating	9 kW	
		7738 kcal/h	
Power rating		9 kW	
Gas connection		R1/2	
Gas consumption	E G20 [20mbar]	m <sup>3</sup> /h	2.85
	Lw G27 [20mbar]	m <sup>3</sup> /h	3.3
	3B/P G30 [37mbar]	kg/h	2.0

**Description:**

Gas cookers are made of high-grade stainless steels. Top plate made of AISI 304 stainless steel with thickness  $\approx 1.5$ mm, burners made of cast-iron. Cooker is equipped with pilot burner with flame safety device. Chrome-plated steel cooker plate ensures heterogeneous distribution of temperatures over the surface.

**700.KG/I-800****700.KG/I-800/S-800****700.KG/I-800/T-800**

The picture is for reference only; final product may be slightly different from the presented example.

**60 LAT**  
NA RYNKU

**Tradition and experience**